

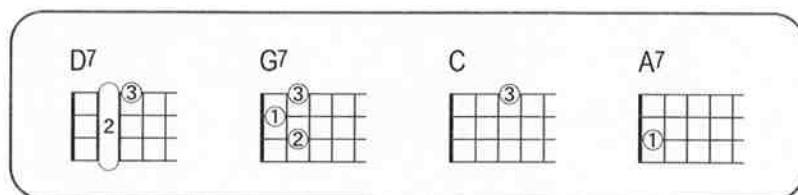
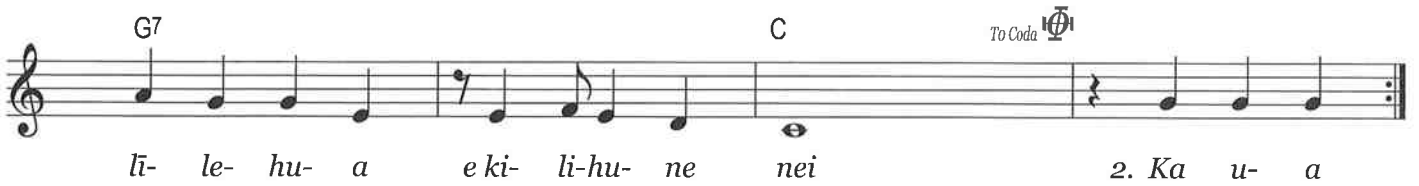
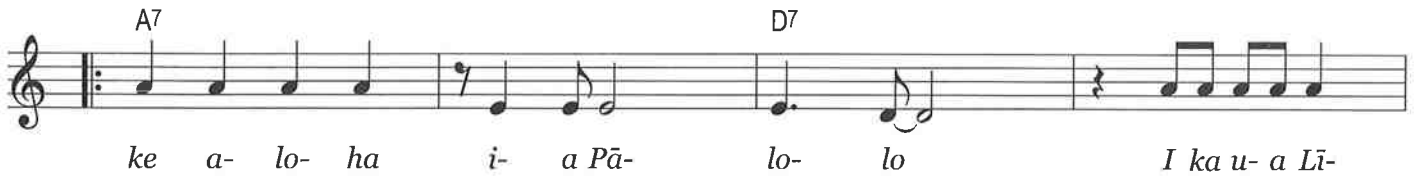
Pālolo

Charles E. King

Allegro



1. Ho- 'i



1. Ho‘i^{A7} ke aloha ia Pālolo^{D7}

My love returns to Pālolo

I ka ua Līlīlehua^{G7} e kilihune^C nei

*Where the Līlīlehua rain
gently mists the valley*

2. Ka ua no ia olu ka mana‘o^{A7}

The rain is soothing to my mind

Ho‘oni^{G7} a‘e nei i ku‘u pu‘uwai^C

Despite my pounding heart

3. Kani ‘ā ka leo o ke kolohala^{A7}

The melodious sound of the pheasant

I ka ulu kukui honehone^{G7} nei^C

Calls from the kukui grove

4. Pumehana kāua i ke aloha^{A7}

Warmed by our love, we snuggle

I ka pili i ke anu o ke kuahiwi^{G7}

To fend off the cold of the mountain

5. Ha‘ina ‘ia mai ana ka puana^{A7}

Let the story be told

I ka ua Līlīlehua^{G7} e kilihune^C nei

Of the gently misting Līlīlehua rain

6. Ha‘ina ‘ia mai ana ka puana^{A7}

Let the story be told

Ho‘i^{G7} ke aloha ia Pālolo^C

My love returns to Pālolo